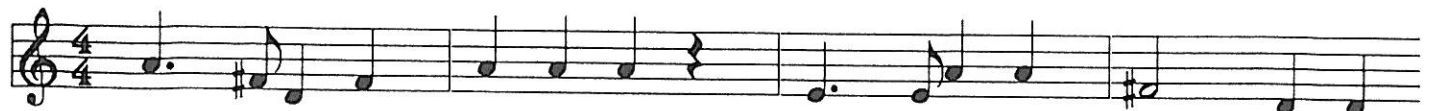


s'Muttezer - Lied

(H. Kist / E.Schaub)



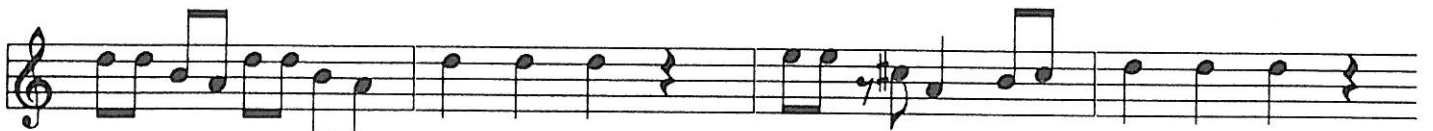
1 z'Mut- tez uf em War- te- berg stön- de drei Ru- i- ne, si



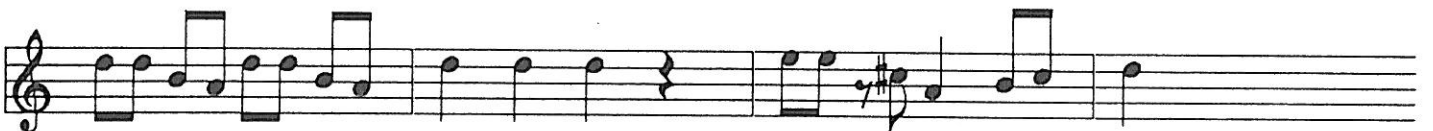
5 lue- ge tru- tzig ü- ber's Land und wit bis Ba- sel i- ne. Wit



9 bis zum Schwarz-wald bis zum Rhi säg wo chas au no schö- ner si?



13 Zi-ge za-ge zi-ge za-ge hoi hoi hoi ! z'Muttez do sy mer de- hei hoi hoi !



17 zi-ge za-ge zi-ge za-ge hoi hoi hoi z'Muttez do sy mer de- hei !

1. z'Muttez uf em Wartebärg stönde drei Ruine
si luege trutzig über's Land und wit bis Basel ine
Wit bis zum Schwarzwald bis zum Rhy,
säg wo chas au no schöner si?

Refrain: Zige zage zige zage hoi hoi hoi!
z'Muttez do sy mer dehei hoi hoi!
zige zage zige zage hoi hoi hoi!
z'Muttez do sy mer dehei!

2. z'Muttez uf em Wartebärg wachse schöni Räbe.
Gsehsch unter dir die grüeni Hard, dr Hörnlifels drnäbe.
D'Chrischona grüesst und s'Bruederholz,
uf so ne Ussicht sy mer stolz!
3. Muttez het dr Wartebärg drum in sim Wappe inne,
e rote Leu, wo ufrächt stöht und roti Türm mit Zinne.
Wie gseht das Wappe rassig us,
es isch e Schmuck für jedes Hus!

4. z'Muttez underm Wartebärg het's fünf alti Strosse,
 die bilde öppis wie ne Stärn, dört wo si zämmestosse,
 gäg' Oscht d'Burggass, d'Hauptstross nach Nord,
 zum Gämpe, nach Basel, nur Geischpel isch kei Ort. Zige zage
5. z'Muttez underm Wartebärg het sich mängs verwandelt:
 Wo d'Buure gwohnt und gwärchet hei, wird jetze meischtens g'handlet.
 Durch d'Bahn, durch's Tram, dur d'Stross und s'Salz,
 isch Muttez g'wachse, nid jedem g'fallts.... Zige zage
6. z'Muttez underm Wartebärg chasch jo mängs erläbe:
 Vill Ort vom Sport, Konzärt und Märt, kei Langwyl au bi Räge,
 Fasnacht, Banntag - vill alti Brüüch,
 wär do nid zuegrifft, dä isch schüüch. Zige zage
7. z'Muttez underm Wartebärg läbe vili Chinder,
 us Nord und Süd, us Oscht und Wescht, jo, s'het au chlini Inder.
 Mir Chinder wänn's dr Wält bewiise:
 Enander gärn ha löst mängi Krise. Zige zage
8. z'Muttez underm Wartebärg gfallt halt mir am beschte:

9. vo Muttez underm Wartebärg tueni mängisch tröume:

VIOLA

MUTTENZ KLINGT

2020

① s' Muttenzer - Lied

Handwritten musical score for Viola, titled "MUTTENZ KLINGT s' Muttenzer - Lied". The score consists of five staves. The first staff is in C major and 3/4 time, starting with a treble clef, a key signature of one sharp (F#), and a common time signature (C). It contains a melody with notes G4, A4, B4, C5, B4, A4, G4, F#4, E4, D4, C4. The second staff continues the melody with notes G4, A4, B4, C5, B4, A4, G4, F#4, E4, D4, C4. The third staff continues the melody with notes G4, A4, B4, C5, B4, A4, G4, F#4, E4, D4, C4. The fourth staff continues the melody with notes G4, A4, B4, C5, B4, A4, G4, F#4, E4, D4, C4. The fifth staff contains a first ending (1.) and a second ending (2.). The first ending consists of three eighth notes G4, A4, B4. The second ending consists of a quarter note G4 followed by a whole rest.

AMS - Flashmob - Kanon

Handwritten musical score for Viola, titled "AMS - Flashmob - Kanon". The score consists of four staves, each labeled with a number (1, 2, 3, 4). The first staff is in C major and 3/4 time, starting with a treble clef, a key signature of one sharp (F#), and a common time signature (C). It contains a melody with notes G4, A4, B4, C5, B4, A4, G4, F#4, E4, D4, C4. The second staff continues the melody with notes G4, A4, B4, C5, B4, A4, G4, F#4, E4, D4, C4. The third staff continues the melody with notes G4, A4, B4, C5, B4, A4, G4, F#4, E4, D4, C4. The fourth staff continues the melody with notes G4, A4, B4, C5, B4, A4, G4, F#4, E4, D4, C4.

VIOLA

Nochbarschaftslied / Corona

Handwritten musical notation for the first staff, starting with a treble clef, a key signature of one sharp (F#), and a common time signature (C). The notation includes a first measure with a fermata over a quarter note, followed by several measures of eighth and quarter notes with slurs and accents.

Handwritten musical notation for the second staff, continuing the melody with slurs and accents. The staff concludes with a double bar line and the word "Fine" written above it.

Handwritten musical notation for the third staff, featuring a first measure with a fermata and a repeat sign. The notation continues with eighth and quarter notes, ending with a double bar line.

Handwritten musical notation for the fourth staff, which begins with a repeat sign and concludes with a double bar line. To the right of the staff, the instruction "D.C. al Fine" is written.

Empty musical staff.

Empty musical staff.

Empty musical staff.

Empty musical staff.

Empty musical staff.

Empty musical staff.

Empty musical staff.

Empty musical staff.

CELLO /
BASS

MUTTENZ KLINGT

2020

s' Muttenser Lied

Handwritten musical score for 's' Muttenser Lied' in bass clef, 9/8 time signature. The score consists of five staves of music. The first staff begins with a natural sign (n) above the first note and a circled 5 (5) above the fifth measure. The second staff has a 'v' above the first measure and a 'v' above the eighth measure. The third staff starts with a circled 10 (10) above the first measure and has a 'v' above the second measure. The fourth and fifth staves feature a natural sign (n) above the first measure of each staff. The music includes various rhythmic values, accidentals (sharps), and articulation marks.

AMS - FlashMob - Kanon

Handwritten musical score for 'AMS - FlashMob - Kanon' in bass clef, 4/4 time signature. The score consists of four staves of music, each labeled with a number (1., 2., 3., 4.) at the beginning. The first staff has a natural sign (n) above the first measure and a circled 6 (6) above the eighth measure. The second staff has a circled 6 (6) above the eighth measure. The third staff has a circled 6 (6) above the eighth measure. The fourth staff has a circled 6 (6) above the eighth measure. The music includes various rhythmic values, accidentals (sharps), and articulation marks.

CELLO /
BASS

Nochbarschaftslied Muffenz/Corona

Handwritten musical score for Cello/Bass, titled "Nochbarschaftslied Muffenz/Corona". The score is written on five staves in G major (one sharp) and 4/4 time. The first staff begins with a treble clef, a key signature of one sharp (F#), and a 4/4 time signature. The music consists of eighth and quarter notes, some with accents (v) and slurs. The second staff continues the melody. The third staff features a repeat sign with a "Fine" marking above it. The fourth staff also contains a repeat sign. The fifth staff concludes with a "Da Capo al Fine" instruction. The bottom half of the page contains seven empty musical staves.